

การจัดการเรียนรู้สมัยใหม่แห่งศตวรรษที่ 21 ด้วยรูปแบบการจัดการเรียนรู้
ผสมผสานแบบยืดหยุ่น สำหรับผู้เรียนระดับอุดมศึกษา

Modern Learning Management of the 21st century with HyFlex learning for Higher Education Students

Rattana Klinjuy

Humanities and Social Science
Suan Dusit University, Lampang Center

บทคัดย่อ

รูปแบบการเรียนรู้ผสมผสานแบบยืดหยุ่น (HyFlex learning) กำลังเข้ามามีบทบาทในยุคแห่งความปกติใหม่ การเรียนรู้แบบไฮเฟล็กซ์เป็นการเรียนรู้ที่หลากหลายมาก ซึ่งช่วยให้นักเรียนสามารถเข้าถึงสื่อการเรียนการสอนแบบตัวต่อตัวหรือทางออนไลน์ในระหว่างหรือหลังช่วงชั้นเรียนตามกำหนดการ การเรียนรู้ผสมผสานแบบยืดหยุ่นต่างจากการสอนแบบบรรยายแบบดั้งเดิมที่เน้นไปที่ผู้สอน ในทางตรงข้ามการเรียนรู้ผสมผสานแบบยืดหยุ่น ได้ถูกออกแบบให้เน้นผู้เรียนเป็นหลัก ซึ่งผู้เรียนจะเป็นผู้ตัดสินใจเลือกเส้นทางที่ดีที่สุดสำหรับการศึกษาของตนเอง และสามารถปรับเปลี่ยนได้ ในระหว่างการเรียนรู้ ผู้เรียนจะมีส่วนร่วมในกระบวนการเรียนรู้และประสบการณ์การศึกษาผ่านทางเลือกของผู้เรียนและ “เป็นประสบการณ์การเรียนรู้ต่อเนื่องหลายรูปแบบที่นักเรียนเป็นผู้กำหนด” (Beatty, 2019) โดยผู้สอนจะสร้างเนื้อหาที่น่าสนใจซึ่งนักเรียนอาจเข้าร่วมแบบเห็นหน้าพร้อมกันแบบตัวต่อตัว (ในชั้นเรียน) แบบตัวต่อตัวแบบเห็นหน้าผ่านการประชุมทางวิดีโอ (เช่น Zoom) หรือแบบอะซิงโครนัสผ่านระบบการจัดการการเรียนรู้ (LMS) ของสถาบัน และนักเรียนจะได้เรียนรู้เนื้อหาในสภาพแวดล้อมการเรียนรู้ และได้รับการประเมินความรู้หลายรูปแบบ เพื่อให้สามารถเข้าใจแนวคิดและกระบวนการของรูปแบบการเรียนรู้ไฮเฟล็กซ์มากขึ้น ในบทความนี้ ผู้เขียนอธิบายให้เห็นถึง ความหมายของรูปแบบการเรียนรู้แบบไฮเฟล็กซ์ หลักการของรูปแบบการจัดการเรียนรู้แบบไฮเฟล็กซ์ รูปแบบการจัดการเรียนรู้แบบไฮเฟล็กซ์กับทักษะการเรียนรู้ในศตวรรษที่ 21 รวมถึงบทบาทของผู้สอน และผู้เรียนในการจัดการเรียนรู้แบบไฮเฟล็กซ์ และเทคโนโลยีเพื่อการออกแบบการจัดการเรียนรู้แบบไฮเฟล็กซ์

คำสำคัญ : การเรียนรู้ผสมผสานแบบยืดหยุ่น การจัดการเรียนรู้ศตวรรษที่ 21 ผู้เรียนระดับอุดมศึกษา

Abstract

Flexible blended learning formats or HyFlex learning play a role in the new normal era. HyFlex learning is a very diverse type of learning. This allows students to access course materials in person or online during or after scheduled class periods. HyFlex learning is different from traditional lecture-based teaching that focuses on teachers. In contrast, HyFlex learning has been designed to focus on students. It is up to the student to decide the best path for their education, and can be adjusted during learning. Learners will participate in the learning process and educational experience through student choice, and it is a student-directed, multimodal learning experience where teachers create engaging content that students may engage with face-to-face, via videoconferencing (such as Zoom) or asynchronously through the institution's learning management system (LMS). Students learn the content in the learning environment and receive knowledge assessments in many forms. To be able to understand better the concepts and processes of the HyFlex learning model, in this article, the author explains the definition and characteristics of the HyFlex learning and principles of the HyFlex learning management model, the benefits and limitations of HyFlex learning management model, including the role of the teacher and learners in HyFlex learning, HyFlex learning management model with learning skills in the 21st century, and Technologies for HyFlex learning

Keywords: HyFlex learning, Education in 21st Century, Higher Education Student

Email: rattana_kli@dusit.ac.th

Introduction

Education in the 21st century is constantly evolving to meet the needs of today's global society, which differs significantly from the past. The rise of technology, a shift towards a more interconnected and globalized world, and a rapidly changing job market have all had a profound impact on education in the 21st century. One of the most significant changes in education in the 21st century is the integration of technology into the classroom. With the prevalence of smartphones, tablets, and laptops, students today have access to an abundance of information at their fingertips. This has led to a shift in the way educators teach and students learn. The traditional model of teacher-centered instruction has given way to a more student-centered approach, with a focus on collaboration, critical thinking, and problem-solving skills. Technology has also made it possible for students to access educational resources and participate in learning activities outside of the traditional classroom setting, providing them with more personalized and flexible learning experiences. (Campillo-Ferrer & Miralles-Martínez, 2021; Khan & Abdou, 2021)

In any educational institution, the students' interests should always be taken into consideration. Their interests play a crucial role in their overall engagement and motivation to learn. When educators ignore the diverse interests of their students, they risk disengagement and decreased academic performance. Considering the students' interests helps to foster a positive learning environment. When students are engaged in topics that they find interesting, they are more likely to participate actively in class discussions and complete their assignments with enthusiasm. This, in turn, creates a positive feedback loop, as the more engaged students are, the more likely they are to succeed academically. Catering to students' interests can help to personalize their learning experiences. Each student is unique and has their own set of interests and passions. By incorporating those interests into the curriculum, educators can create a more personalized learning experience for each student (Kashyap, 2023). This not only makes learning more enjoyable for the students, but it also helps them to better understand the material and retain the information for a longer period of time. Furthermore, taking into account the students' interests can also help to create a more inclusive and diverse learning environment. When teachers consider the various interests of their students, they are better able to create a curriculum that reflects the diversity of the student body. This can help to create a more inclusive environment where all students feel that their interests and perspectives are valued and respected. It is important to note that considering the students' interests does not mean abandoning the curriculum or academic standards. Rather, it means finding ways to incorporate their interests into the established curriculum, making learning more relevant and meaningful to the students.

Teaching and learning that combines online teaching materials and interaction with traditional classroom methods. HyFlex learning is a relatively new, but increasingly popular, approach to education that combines the benefits of face-to-face instruction with the flexibility of online learning. In a HyFlex model, students have the option to attend classes in person, remotely, or both, allowing them to choose the mode of instruction that best suits their individual needs and preferences. This innovative approach to education has the potential to revolutionize the way we think about teaching and learning, offering a more inclusive and flexible approach to education that benefits both students and educators. The HyFlex learning concept and process provide a flexible and adaptable approach to education, allowing students to choose between in-person, virtual, or hybrid learning options. This model aims to give students the ability to participate in their preferred learning environment, while still receiving the same quality of education. This concept is particularly relevant in the current context, where the future of education remains uncertain due to the ongoing impact of the COVID-19 pandemic. The HyFlex model can help overcome some of the obstacles created by the uncertainty of the future learning environment in several ways. Firstly, it provides students with the flexibility to choose how they want to engage with their coursework, allowing them to adapt to their individual circumstances and preferences. This can be particularly valuable for students who may be at higher risk of contracting COVID-19 or who have other personal or professional commitments that make it difficult to attend in-person classes. By providing multiple options for engagement, the HyFlex model ensures that students can continue their education regardless of the challenges they may face. Moreover, the HyFlex model can also help institutions to future-proof their educational offerings. By offering a flexible and adaptable approach to education, institutions can better prepare for a range of potential future disruptions, such as natural disasters, technological outages, or public health crises. This model also provides institutions with the agility to respond to changing student needs and preferences, ensuring that they remain relevant and accessible in an ever-evolving educational landscape.

In conclusion, the HyFlex learning concept and process can help overcome some of the obstacles created by the uncertainty of the future learning environment, particularly in the context of the COVID-19 pandemic. By providing flexible and adaptable learning options, this model ensures that students can continue their education regardless of the challenges they may face, while also helping institutions to manage logistical challenges and future-proof their educational offerings. As the future of education remains uncertain, the

HyFlex model provides a valuable framework for navigating this uncertainty and ensuring that students have the opportunity to thrive in their educational pursuits.

Therefore, in this article, the author wants to present a HyFlex learning model. This is a flexible teaching model based on the learning environment. It uses a teaching and learning process that allows students to create knowledge by themselves using technology, which students can study both in the classroom and outside the school, anytime, anywhere. The author will explain the definition and characteristics of HyFlex, principles for organizing HyFlex learning, benefits of HyFlex learning, the role of teachers and students in HyFlex learning management, HyFlex learning management model with learning skills in the 21st century, and technologies for HyFlex learning

HyFlex learning definition and characteristics

HyFlex learning, short for Hybrid Flexible, is a modern teaching and learning approach that combines the best of both face-to-face and online learning methods. It offers students the flexibility to choose whether they want to attend classes in person or virtually, allowing for a more personalized and adaptable learning experience. The meaning of the HyFlex learning style lies in its ability to cater to the diverse needs and preferences of students, making education more accessible and inclusive. (Beatty, 2019, n. p.)

One of the key features of HyFlex learning is its flexibility. Students have the option to attend classes in person, participate remotely, or even switch between the two based on their individual circumstances. This allows for greater convenience, especially for those with busy schedules, family commitments, or health concerns. It also eliminates geographical barriers, giving students the opportunity to access education from anywhere in the world. The HyFlex model ensures that no student is left behind. In traditional face-to-face or fully online courses, different learning styles and personal preferences are often overlooked. However, HyFlex learning allows students to choose the mode of instruction that best suits their needs, whether it be in-person interaction, online collaboration, or a combination of both. This promotes a more inclusive learning environment, where students of all backgrounds and abilities can thrive. The HyFlex approach promotes student engagement and autonomy. With the freedom to choose how they participate in class; students are more likely to take ownership of their learning and stay motivated. They can tailor their learning experience to their own preferences, schedule, and pace, leading to a more personalized and effective educational journey. The HyFlex learning style represents a significant shift in the way we approach education. By prioritizing flexibility, inclusivity, engagement, and adaptability, this model offers a more student-centered approach to learning. It recognizes and accommodates the diverse needs and preferences of students, ultimately enhancing accessibility and opportunities for success. As technology continues to advance and students' needs evolve, the HyFlex model is set to play a crucial role in shaping the future of education.



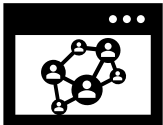
		
Face-to-Face (F2F) Live	Online Livestream (OL)	Online Asynchronous (OA)
Students will attend class F2F in your classroom. Class sessions will be livestreamed and recorded.	Students will be watching your class livestreamed online while you're teaching.	Students will be watching the posted recording of the class session online at their convenience.

Figure 1 HyFlex learning style

Principles of the HyFlex learning management model

The HyFlex learning management model is a unique approach to education that has gained attention in recent years. This model aims to provide students with the flexibility to engage in learning both in a traditional classroom setting and through online platforms. The principles of the HyFlex learning management model revolve around the integration of face-to-face and online learning, allowing students to choose the mode of instruction that best fits their individual needs and preferences. One of key principles of the HyFlex learning model is the concept of student choice and autonomy. Students are given the freedom to select whether they want to attend classes in person or participate in the same class remotely. This empowers students to take control of their learning experience and facilitates a more personalized approach to education.

Students have the flexibility to switch between in-person and online attendance as needed, allowing them to accommodate external responsibilities and changes in their schedule. Another principle of the HyFlex learning model is the utilization of technology to facilitate a seamless and integrated learning experience. The model relies on the use of various educational technologies, such as learning management systems, video conferencing tools, and online resources, to support both in-person and online instruction. By leveraging technology, educators can deliver high-quality instruction to all students, regardless of their physical location. Furthermore, the integration of technology enables students to access course materials, participate in class discussions, and submit assignments with ease, creating a more accessible and inclusive learning environment. The HyFlex learning model emphasizes the importance of active engagement and interaction in both in-person and online learning environments. In traditional face-to-face settings, students can engage in discussions, collaborate with their peers, and receive immediate feedback from their instructors. Online learning environments offer opportunities for asynchronous communication, virtual collaboration, and the use of multimedia resources. By engaging students in different modes of interaction, the HyFlex model aims to cater to diverse learning styles and preferences, ultimately enhancing the overall learning experience.

Moreover, the HyFlex learning model fosters a culture of equity and inclusivity, ensuring that all students have equal opportunities to access and engage with course content. By providing multiple options for participation, the model accommodates students with different learning needs, physical disabilities, or other circumstances that may hinder their ability to attend in-person classes. This promotes a more inclusive and supportive learning environment, where all students can thrive and succeed in their academic pursuits.

The HyFlex learning management model is guided by principles that prioritize student choice and autonomy, the integration of technology, active engagement and interaction, and equity and inclusivity. By embracing these principles, educational institutions can implement a flexible and adaptable approach to instruction that meets the diverse needs of students and promotes a more engaging and inclusive learning experience. As technology continues to evolve and shape the future of education, the HyFlex learning model offers a promising framework for delivering high-quality education in a way that is responsive to the changing needs and preferences of students.

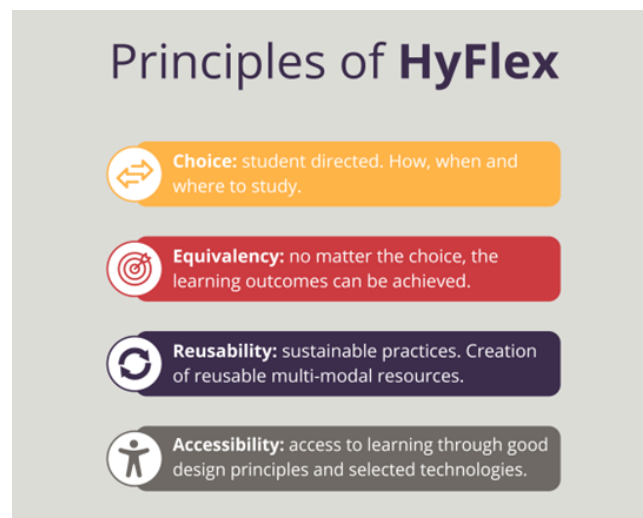


Figure 2 Principle of HyFlex

Benefits of HyFlex Learning Model

The key benefit of HyFlex learning is its flexibility. Students have the freedom to choose whether they want to attend classes in person or remotely, allowing them to tailor their educational experience to their individual needs and circumstances. This flexibility is particularly important for students who may have other commitments, such as work or family responsibilities, that make it difficult for them to attend classes in person. By giving students the option to learn remotely, HyFlex learning ensures that no one is left behind and that all students have equal access to education.

Furthermore, the HyFlex model offers a personalized learning experience. Students have the freedom to choose the mode of instruction that best suits their learning style and preferences, whether that be in person or online. This level of choice and personalization can help to increase student engagement and motivation, as well as improve overall learning outcomes. Additionally, by allowing students to learn in the way that

works best for them, HyFlex learning can help to create a more inclusive and supportive learning environment that caters to the diverse needs of today's students.

Moreover, HyFlex learning can also benefit educators. By offering the option to teach in person or remotely, educators have more flexibility in how they deliver instruction. This can be particularly valuable in situations where face-to-face teaching may not be possible, such as during a pandemic or other emergency. Additionally, the ability to teach in a variety of settings can allow educators to reach a wider audience and create a more inclusive learning environment.

However, while HyFlex learning offers many advantages, it also comes with its own set of challenges. Educators must be equipped with the necessary tools and resources to effectively deliver instruction in both in-person and online settings. Additionally, maintaining a cohesive learning experience for students across different modes of instruction can be a complex task that requires careful planning and coordination.

HyFlex learning represents an innovative and inclusive approach to education that offers students the flexibility to choose how and where they learn, while also providing educators with the opportunity to deliver instruction in a variety of settings. By offering a more personalized and inclusive educational experience, HyFlex learning has the potential to revolutionize the way we think about teaching and learning, ultimately benefiting both students and educators. The COVID-19 pandemic has disrupted education systems around the world, forcing institutions to adapt to the uncertainty of the future learning environment. As a result, many schools and universities have turned to the HyFlex learning concept and process to help overcome some of the obstacles created by this uncertainty.

Limitations of HyFlex learning management model

HyFlex learning, a model that combines in-person and online instruction, has gained popularity in recent years as a way to offer flexibility and convenience to students while still maintaining a sense of community and engagement. However, this model also comes with its own set of limitations that can impact the effectiveness of the learning experience.

HyFlex learning is the potential for unequal learning experiences for students. In a HyFlex course, students have the option to attend class in person, participate online, or do both. This means that students who choose to attend class online may miss out on valuable face-to-face interactions with their peers and instructors, leading to a less engaging and interactive learning experience. Additionally, students who choose to attend in person may have an advantage in terms of building relationships with their instructors and peers, as well as accessing resources and support.

Another limitation of HyFlex learning is the potential for increased workload and complexity for instructors. In a traditional classroom setting, instructors are able to focus on teaching a single group of students at a time. However, in a HyFlex model, instructors are required to simultaneously manage in-person and online instruction, which can be time-consuming and challenging. This can lead to a lack of consistency in the delivery of content and assessments, as well as increased stress and workload for instructors. Furthermore, the technology required for effective HyFlex learning can be a significant barrier for both students and instructors. In order to successfully participate in a HyFlex course, students need access to reliable internet, appropriate devices, and the ability to navigate online learning platforms. Similarly, instructors need to be proficient in using technology to deliver content, engage students, and manage assessments. For some individuals, especially those in under-resourced or rural areas, these technological requirements can be a significant challenge. The cost of implementing and maintaining the technology required for HyFlex learning can be a limitation for educational institutions. Building and maintaining the infrastructure necessary for a successful HyFlex model, including classrooms equipped with cameras and microphones, as well as learning management systems, can be prohibitively expensive for some institutions. This cost can be a barrier to widespread adoption of HyFlex learning, particularly for smaller or less well-funded institutions.

While HyFlex learning offers a flexible and convenient option for students, it also comes with a number of limitations that can impact the quality of the learning experience. Unequal learning experiences for students, increased workload and complexity for instructors, technological barriers, and cost considerations are all factors that can hinder the effectiveness of the HyFlex model. As educational institutions continue to explore and adapt to new modes of instruction, it is important to carefully consider the potential limitations of each model in order to provide the best possible learning experience for all students.

The role of the teacher in organizing HyFlex learning

HyFlex learning, a combination of face-to-face and online education, has become increasingly popular in recent years due to its flexibility and adaptability to different learning styles. In this model, students have the option to attend traditional in-person classes, participate in live online sessions, or access recorded lectures and materials at their own pace. This approach requires a significant level of organization and coordination from the teacher in

order to ensure that all students have a similar and high-quality learning experience, regardless of their chosen mode of participation.

The role of the teacher in HyFlex learning is multifaceted and requires a range of skills and abilities to ensure that the needs of all students are met. The teacher must be adept at using technology to deliver engaging and interactive online content, and provide support to students who may require assistance in navigating the digital learning environment. However, the teacher's role in the face-to-face setting remains just as crucial, as they must create a welcoming and inclusive classroom atmosphere, facilitate discussions, and offer personalized support to students who may need additional help.

One of the fundamental responsibilities of the teacher in HyFlex learning is to design and deliver instruction that is accessible and engaging for students participating in both the in-person and online formats. This requires careful planning and consideration to ensure that the content is presented in a way that is equally beneficial to all students, regardless of their chosen mode of participation. Additionally, teachers must be prepared to adapt their instructional strategies to cater to different learning styles and preferences, as well as be open to integrating new technologies and resources to enrich the learning experience for all students.

In a HyFlex learning environment, the teacher must also serve as a guide and mentor to students, assisting them in setting goals, managing their time effectively, and navigating the learning resources available to them. This may involve offering personalized support to students who are struggling to keep up with the material, or providing additional challenges to those who require more advanced content. Moreover, the teacher plays a vital role in fostering a sense of community and collaboration among students, regardless of their physical location by facilitating group activities, discussions, and project work that can be completed both in person and online. Furthermore, the teacher in HyFlex learning must be prepared to assess student progress and provide feedback in a timely manner, regardless of the mode of participation. This may involve utilizing various assessment methods, such as online quizzes, discussion boards, and traditional exams, to evaluate student performance and understanding. The teacher must also be available to provide constructive feedback and support to students, guiding them towards improvement and success in their studies. Overall, the role of the teacher in HyFlex learning is critical to the success of the educational experience for students. They must possess a diverse skill set that encompasses technology integration, instructional design, personalized support, and assessment strategies. By fulfilling these responsibilities, the teacher can create an inclusive and engaging learning environment that accommodates the needs and preferences of all students, regardless of their chosen mode of participation.

The role of learners in HyFlex learning

HyFlex learning is a flexible and innovative approach to education that combines elements of both traditional in-person learning and online learning. In this model, students have the option to choose whether to attend classes in person, participate remotely via video conferencing, or watch recorded lectures. This approach offers students the flexibility to engage with course materials in a way that best suits their learning needs and preferences. In a HyFlex learning environment, the role of learners is crucial in shaping their educational experience and maximizing the benefits of this model.

The key roles of learners in HyFlex learning is taking ownership of their learning experience. With the ability to choose how they engage with course materials; students are responsible for making informed decisions about when and how to participate in class activities. This requires self-discipline, time management, and active engagement with course materials to ensure that learning goals are met regardless of the mode of instruction. Students must also be proactive in communicating their preferences and needs to instructors to facilitate effective collaboration and support the success of their learning experience. Furthermore, learners play an active role in creating a positive and inclusive learning environment in a HyFlex setting. This involves respecting the choices of their peers in how they engage with the course, being open to different perspectives and learning styles, and being mindful of the potential challenges and barriers that their peers might face in accessing course materials or participating in class activities. By fostering a culture of mutual respect and understanding, students can contribute to a supportive and enriching learning community that benefits everyone in the class, regardless of how they choose to participate in the course.

Students in a HyFlex learning environment have the opportunity to develop essential digital literacy skills. Whether attending classes in person or remotely, students must be proficient in using technology tools to access course materials, collaborate with peers, and engage with course content online. This requires a willingness to adapt to new technologies, troubleshoot technical issues, and navigate digital platforms effectively. By embracing these digital literacy skills, learners can enhance their ability to communicate, collaborate, and succeed in an increasingly digital world.

Learners play a crucial role in the success of HyFlex learning by taking ownership of their learning experience, creating a positive and inclusive learning environment, and developing digital literacy skills. By embracing these responsibilities, students can maximize the benefits of HyFlex learning and take full advantage of its flexibility and innovation. As the educational landscape continues to evolve, the role of learners will continue to be essential in shaping the future of education.

Technologies for HyFlex learning

One of the key technological tools that have greatly supported the management of HyFlex learning is Learning Management Systems (LMS). LMS platforms, such as Moodle, Blackboard, and Canvas, provide a centralized hub for organizing course materials, assignments, and resources. In a HyFlex environment, educators can utilize LMS to create and deliver content for both in-person and online students, as well as to facilitate communication and collaboration among students and instructors. LMS also offers features for tracking student progress and engagement, which is essential for maintaining accountability and assessing student performance.

Video conferencing and web conferencing tools have been instrumental in enabling synchronous communication and interaction in a HyFlex setting. Platforms like Zoom, Microsoft Teams, and Google Meet allow instructors to conduct live lectures and discussions that can be attended by both in-person and remote students simultaneously. These tools also support the recording of live sessions, making it possible for students to access and review the material at their convenience. Moreover, breakout rooms and collaborative features within these platforms promote small group discussions and teamwork among students, regardless of their physical location. Furthermore, digital assessment and feedback tools have streamlined the process of evaluating student performance and providing timely feedback. Online quizzes, assignments, and exams can be administered and graded through various assessment platforms, reducing the administrative burden on educators and ensuring fairness in evaluating all students, whether they are present in the classroom or not. Moreover, digital feedback tools enable instructors to provide personalized feedback to students in a timely manner, fostering a supportive and constructive learning environment.

Another indispensable piece of technology for managing HyFlex learning is adaptive learning software. These programs use data analytics and machine learning algorithms to personalize the learning experience for each student, offering them tailored content and exercises based on their strengths and weaknesses. In a HyFlex environment, adaptive learning technology can help educators address the diverse needs of both in-person and online students by providing individualized support and guidance. Technology has played a crucial role in the management of HyFlex learning, providing educators and institutions with the tools they need to effectively deliver and facilitate flexible learning experiences. From Learning Management Systems to video conferencing, digital assessment, and adaptive learning software, technology has not only made it possible to manage the complexities of HyFlex learning but has also enhanced the overall quality of education by enabling personalized and interactive experiences for all students, regardless of their physical location. As the demand for flexible learning models continues to grow, the role of technology in managing HyFlex learning will only become more essential in the years to come.

Conclusion

HyFlex learning is an instructional technology that enhances educational management in the 21st century by providing flexibility and adaptability to the ever-changing needs of students and educators. It combines online and in-person learning, allowing students to choose how they want to engage with the material and interact with their instructors. This approach to education has gained popularity in recent years, particularly as the Covid-19 pandemic forced educational institutions to quickly adapt to a fully remote or hybrid learning environment. HyFlex learning is an innovative approach to education that combines the best of online and in-person learning. It focuses on student choice and flexibility, allowing learners to choose how to access course content and interact with their peers and instructors. The HyFlex approach allows students to choose how they will engage in their course content, whether synchronously (in-person or online) or asynchronously (self-paced). This provides students with the flexibility to choose the learning environment that works best for them, allowing them to take full advantage of their learning. In addition, HyFlex courses typically include a variety of innovative tools and strategies to promote active learning, such as small group activities and online discussion forums. This approach also allows students to take advantage of the latest online technologies, such as video conferencing and virtual reality. HyFlex learning makes it possible to personalize learning experiences to meet the needs of individual learners, ensuring that all students are able to maximize their potential and reach their academic goals.

References

- Brain J. Beatty (2010). Hybrid Courses with Flexible Participation_ The HyFlexDesign. Spring 2010. Draft V.2.2
- Brain J. Beatty (2010). Hybrid Courses with Flexible Participation_ The HyFlexDesign. Spring 2010. Draft V.2.2
- Beatty, B. (2011, November). HyFlexCourse Design: A Summary Report on Five Years of Implementation. Peer-reviewed paper presented at the Association for EducationalCommunication and Technology International Conference, Jacksonville, FL.
- Beatty, B. J. (2019). Hybrid-Flexible Course Design: Implementing student-directed hybrid classes (1st ed.). EdTech Books. Retrieved from <https://edtechbooks.org/hyflex>
- Cowie, James., (2021). *The Future of Higher Education Is Anytime, Anywhere, Any Way. HyFlex Learning Can Make That Happen.* available online at www.ejel.org. Retrieved from <https://collegiseducation.com/news/online-learning/the-future-of-higher-education-is-hyflex/>
- Khan, A., Egbue, O., Palkie, B., & Madden, J. (2017). Active learning: Engaging students to maximize learning in an online course. The Electronic Journal of e-Learning Volume 15 Issue 2 2017, (pp107-115) available online at www.ejel.org. Retrieved from <https://files.eric.ed.gov/fulltext/EJ1141876.pdf>